

# DO

# DO NOT



# READ ME QUICK START GUIDE

DO SEAL ALL CUTS

DO FILL ALL NAIL HOLES

DO INSTALL MIN. 6" ABOVE GRADE

DO FOLLOW NUSKU TERRATEK  
INSTALLATION INSTRUCTIONS

DO FOLLOW YOUR LOCAL BUILDING  
CODE REQUIREMENTS

DO FOLLOW HIGHEST BUILDING  
INDUSTRY STANDARDS

DO APPLY EXTERIOR RATED FINISH TO ALL  
SIDES OF THE PRODUCT PRIOR TO  
INSTALLATION AS A BEST PRACTICE.

DO USE ONLY TOP QUALITY FINISHES &  
FOLLOW MANUFACTURER'S INSTRUCTIONS

DO USE STAINLESS STEEL FASTENERS

DO USE RAINSCREEN WALL  
CONSTRUCTION AS BEST PRACTICE

DO USE BRUSH TO APPLY FINISH OR SPRAY TO  
ACHIEVE COMPARABLE MIL THICKNESS

DO USE FINISHES THAT  
CONTAIN A WATER REPELLENT

DO NOT USE FOR  
STRUCTURAL APPLICATIONS

DO NOT INSTALL WITHOUT MIN. 2"  
CLEARANCE FROM DECKS, PATIOS,  
CONCRETE & ROOF SURFACES

DO NOT USE FOR DECKING, RAILING,  
FENCES OR TRELLISES

DO NOT INSTALL OR STORE IN  
CONTACT WITH THE GROUND

DO NOT STORE IN DIRECT  
CONTACT WITH CONCRETE

DO NOT INSTALL WHERE WATER  
SPRINKLERS OR FOUNTAINS  
CAN REGULARLY WET

DO NOT USE CAULKING OR SEALANT  
IN PLACE OF FLASHING

DO NOT INSTALL WITH MOISTURE  
CONTENT ABOVE 15%

DO NOT STORE WITH TIGHTLY  
WRAPPED PLASTIC

DO NOT IGNORE QUICK  
START GUIDE

## FINISH THE PROJECT RIGHT



PROPER STORAGE



FASTENERS & SCHEDULE



SEAL ALL CUTS



TIME TO FINISH

## FAILURE TO FOLLOW PROPER INSTALLATION & FINISH PRACTICES WILL NEGATE PRODUCT WARRANTIES.

WOOD IS A PRODUCT OF NATURE, SO INDIVIDUAL PIECES VARY IN PERFORMANCE. DECKING, SIDING & EAVES ARE SINGULAR COMPONENTS OF A BUILDING. THE PERFORMANCE IS DEPENDENT ON MANY CRITICAL FACTORS INCLUDING THE STRUCTURE'S DESIGN, THE CRAFTSMEN'S SKILLS, THE USE OF OTHER MATERIAL, THE PRODUCTS EXPOSURE AND THE CLIMATE. THE MANUFACTURER AND MERCHANT HAVE NO CONTROL OVER THESE VARIABLES. FOLLOWING THIS MANUAL WILL HELP IN ACHIEVING SATISFACTORY PERFORMANCE UNDER MOST CONDITIONS; HOWEVER, IT WILL NOT GUARANTEE FLAWLESS PERFORMANCE. PLEASE REFER TO MANUFACTURER'S WARRANTY FOR ADDITIONAL INFORMATION.



## STORAGE

STORE NUSKU TERRATEK IN A GARAGE OR SHED WITH ADEQUATE AIR CIRCULATION AND PROTECTION FROM THE ELEMENTS.

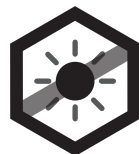
KEEP NUSKU TERRATEK DRY. IF IT CAN'T BE STORED UNDER A ROOF, PROTECT IT WITH A WATERPROOF COVER. MAKE SURE THE COVER IS SECURE BUT LOOSE ENOUGH TO PERMIT AIR CIRCULATION.

STORE NUSKU TERRATEK OFF THE GROUND, AWAY FROM WET CONCRETE AND PROTECTED FROM DIRT, MOISTURE, DIRECT SUN & EXTREME HEAT.

DEFINITELY  
AVOID



EXCESSIVE  
MOISTURE



EXCESSIVE  
SUN



EXCESSIVE  
HEAT



PROPER  
CIRCULATION



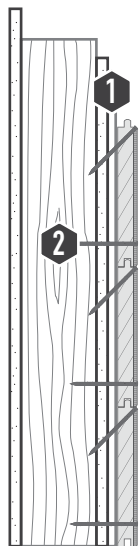
GROUND  
CLEARANCE



PROPER  
COVERAGE

DEFINITELY  
ALLOW

IF NUSKU TERRATEK IS EXPOSED TO EXCESSIVE HEAT OR SUN IT MAY SHRINK CAUSING CUPPING, CHECKING OR SAP BLEED. IF NUSKU TERRATEK IS EXPOSED TO EXCESSIVE MOISTURE IT CAN SWELL, RAISE GRAIN OR BLEED TANNINS.



### 1 EXTERIOR WALL ASSEMBLY

THE BEST WAY TO ACHIEVE A RAINSCREEN WALL ASSEMBLY IS TO INSTALL VERTICAL FURRING STRIPS OVER THE WATER RESISTIVE BARRIER, DIRECTLY OVER THE STUDS. THE SIDING IS THEN FASTENED OVER THESE VERTICAL FURRING STRIPS. WE RECOMMEND 1/2" SHEATHING & TYPAR HOUSE WRAP FOR OPTIMAL PERFORMANCE. WHEN INSTALLING VERTICALLY USE HORIZONTAL FURRING STRIPS WITH 2" DRAINAGE SLOTS EVERY 18" ON THE BACK OF FURRING STRIPS.

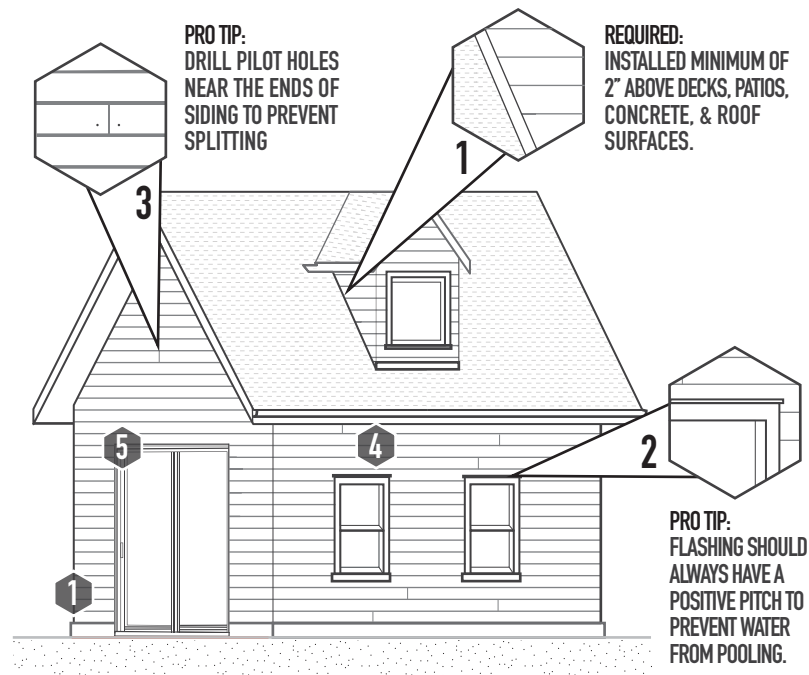
### 2 PROPER FASTENING

THE SIDING CAN BE FACE NAILED OR BLIND NAILED (ON AN ANGLE THROUGH THE TONGUE) WITH NAILS SPACED A MAXIMUM OF 24" ON CENTER. COASTAL INSTALLATIONS WE RECOMMEND ADDITIONAL NAIL THROUGH THE FACE 1" FROM THE BOTTOM OF THE BOARD & RECOMMEND FLUSH NAILING FOR BEST AESTHETIC. FINISHING NAILS, BRAD NAILS & STAPLES ARE NOT APPROVED FOR EXTERIOR INSTALLATION.



## INSTALLATION

# EXAMPLES OF SIDING & HORIZONTAL INSTALLATION



PRO TIP:  
DRILL PILOT HOLES  
NEAR THE ENDS OF  
SIDING TO PREVENT  
SPLITTING

REQUIRED:  
INSTALLED MINIMUM OF  
2" ABOVE DECKS, PATIOS,  
CONCRETE, & ROOF  
SURFACES.

PRO TIP:  
FLASHING SHOULD  
ALWAYS HAVE A  
POSITIVE PITCH TO  
PREVENT WATER  
FROM POOLING.

### 1 CLEARANCE

SIDING SHOULD BE INSTALLED A MINIMUM OF 6" ABOVE GRADE & MINIMUM OF 2" ABOVE DECKS, PATIOS, CONCRETE & ROOF SURFACES. KEEP NUSKU TERRATEK CLEAR FROM ANY SPRINKLERS OR SHRUBBERY THAT CAN REGULARLY WET THE MATERIAL.

### 2 FLASHING

HORIZONTAL METAL FLASHING MUST BE INSTALLED PRIOR TO SIDING INSTALLATION ABOVE ALL WALL PENETRATIONS & ABOVE ALL PROJECTING WOOD TRIM. SIDING MUST BE INSTALLED A MINIMUM OF 1/4" ABOVE ALL FLASHING.

### 3 FIELD JOINTS

FIELD JOINTS SHOULD BE LOCATED THROUGHOUT EACH ELEVATION WITHOUT A RECOGNIZABLE PATTERN. CUT ENDS AT 45 DEGREE ANGLES TO FORM AN OVERLAPPING JOINT & ENSURE THAT ALL JOINTS MEET OVER STUDS, BLOCKING OR FURRING STRIPS & THAT FASTENER PENETRATION REQUIREMENTS ARE ADHERED TO. WHEN BLIND NAILING, AN ADDITIONAL FACE NAIL ON EACH SIDE OF THE JOINT IS RECOMMENDED TO PREVENT THE JOINT FROM OPENING. ALL END CUTS MUST BE SEALED TO PREVENT WATER ABSORPTION.

### 4 FASTENERS

STAINLESS STEEL, RING OR SPIRAL SHANK SIDING NAILS ARE RECOMMENDED. USE NO. 304 STAINLESS FOR GENERAL INSTALLATIONS & NO. 316 STAINLESS FOR COASTAL. DRIVE NAILS FLUSH WITH THE SURFACE OF THE MATERIAL & MUST ACHIEVE 1-1/4" PENETRATION INTO SOLID SUBSTRATE. OVERDRIVEN NAILS MUST BE FILLED WITH EXTERIOR WOOD PUTTY.

### 5 CAULKING

USE AN EXTERIOR GRADE HIGH-PERFORMANCE ACRYLIC-LATEX, ACRYLIC-SILICONE, ACRYLIC, POLYURETHANE OR POLYSULFIDE CAULK OR SEALANT TO SEAL GAPS AROUND WINDOWS & DOORS & IN AREAS WHERE SIDING MEETS VERTICAL TRIM.